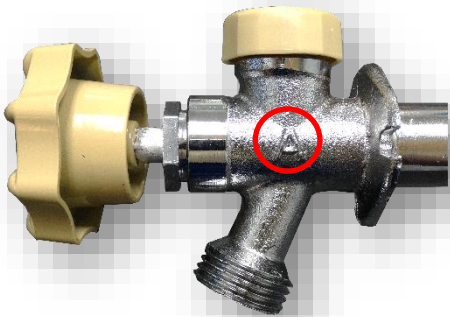


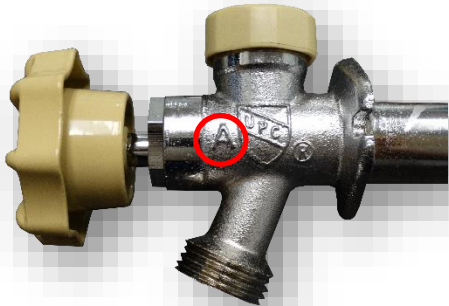


M72AS Troubleshooting

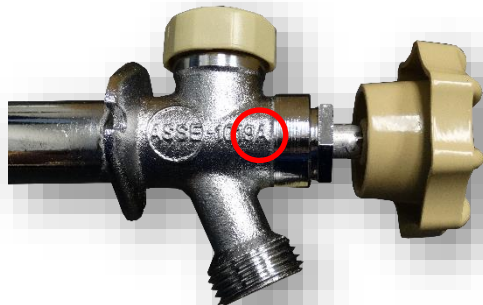
STEP 1: Look for the “A” on the body.



- Trademark “A” alone on the side of the body



- Trademark “A” alongside the UPC Logo



- ASSE-1019 Logo with “A “



WARNING:

DO NOT identify the sillcock by the disc/tag on the handle as a customer may have used a M72AS-HASK repair kit previously on a NON-AV sillcock.

STEP 2: Identify the Leak

Leaking through Vacuum Breaker?

(Under the plastic cap)



How to Diagnose:

1. Remove the cap cover.
2. If water flows for a brief instant but then stops, this is normal operation.
3. If the float doesn't seal when the water is on, then it needs to be replaced.



M73X-KIT

STEP 2: Identify the Leak (Cont'd)

Leaking through vent hole, behind the handle, or through the outlet?

(When valve is turned OFF)



How to Diagnose:

1. Identify the leak is coming from the vent hole, behind the handle, or through the outlet when the valve is in off position.
2. Recommend to replace the complete valve assembly, M73X-Repair Kit (4", 6", 8", 10", 12" or 14")

Possible Reasons for this leak: Faulty Washer(s), Spring, or Assembly.

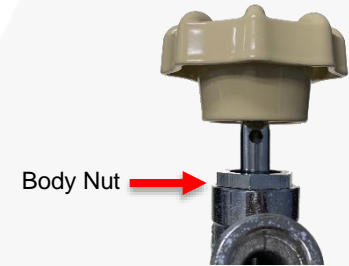
STEP 3: Determine the Valve Size



When the valve is Installed

How to Measure:

1. Shut off the water supply to the valve.
2. Remove the handle and the body nut behind the handle.
3. Unscrew the valve stem and remove from the sillcock housing.
4. Measure the **entire stem** including the spring and seal assembly. (BLUE)



13.25" (SIZE USED TO DETERMINE STEM REPLACEMENT KIT SIZE)

Customer's Measurement	New Stem Size
7.25" or 7 1/4"	4"
9.25" or 9 1/4"	6"
11.25" or 11 1/4"	8"
13.25" or 13 1/4"	10"
15.25" or 15 1/4"	12"
17.25" or 17 1/4"	14"



STEP 3: Determine the Valve Size

When the valve is **NOT** Installed

How to Measure:

1. The valve length is measured from the back of the wall plate to the edge of the Hex on the inlet end.



Customer's Measurement	New Stem Size
4"	4"
6"	6"
8"	8"
10"	10"
12"	12"
14"	14"

