

P710/710V SPEC SHEET

Diaphragm Valve (Flanged)

Pressure Rating: 1" - 3" 150 PSI @ 73°F
 4" - 6" 72 PSI @ 73°F
 8" 43 PSI @ 73°F

Maximum Temperature: 140°F

Glandless construction provides complete corrosion protection.
 Smooth and exact operation with clear indication of opening degree.
 Adjustable stopper to avoid over tightening.
 Stainless Steel (304 and 316) stems are available for use in highly corrosive environments.



Diaphragm Valves	Body	Ends	Diaphragm
P710	Sch 80 PVC	Flanged	EPDM
P710V	Sch 80 PVC	Flanged	FPM

Size	1"	1 1/2"	2"	2 1/2"	3"	4"	6"	8"
<i>D</i>	4.25	5.00	5.98	7.01	7.52	9.02	11.46	13.50
<i>D1</i>	3.11	3.86	4.76	5.51	5.98	7.52	9.49	11.77
<i>D2</i>	2.48 x 3.46	4.92	5.83	7.17	7.99	10.04	15.43	17.01
<i>D3</i>	4.33	5.91	5.91	8.27	8.27	9.84	15.94	15.94
<i>d</i>	0.98	1.61	2.05	2.64	3.07	3.94	5.83	7.80
<i>L</i>	5.91	6.93	7.95	9.84	10.39	12.95	18.90	22.44
<i>T</i>	0.71	0.59	0.75	0.79	0.91	0.91	1.02	1.18
<i>H1</i>	3.86	5.12	5.83	7.44	9.84	10.83	13.15	17.72
<i>H2</i>	6.30	7.87	8.86	10.55	13.50	15.08	18.74	24.69
<i>I</i>	0.59	0.87	1.22	1.54	1.89	2.36	2.76	3.74
<i>n-Øe</i>	4 - 0.63	4 - 0.63	4 - 0.75	4 - 0.75	4 - 0.75	8 - 0.75	8 - 0.91	8 - 0.91
<i>Cv</i>	8.87	31.09	43.15	90.68	116.79	186.78	345.26	700.00

The Cv Factor is the gallons of water per minute passed through the valve, with a 1 PSI pressure drop.



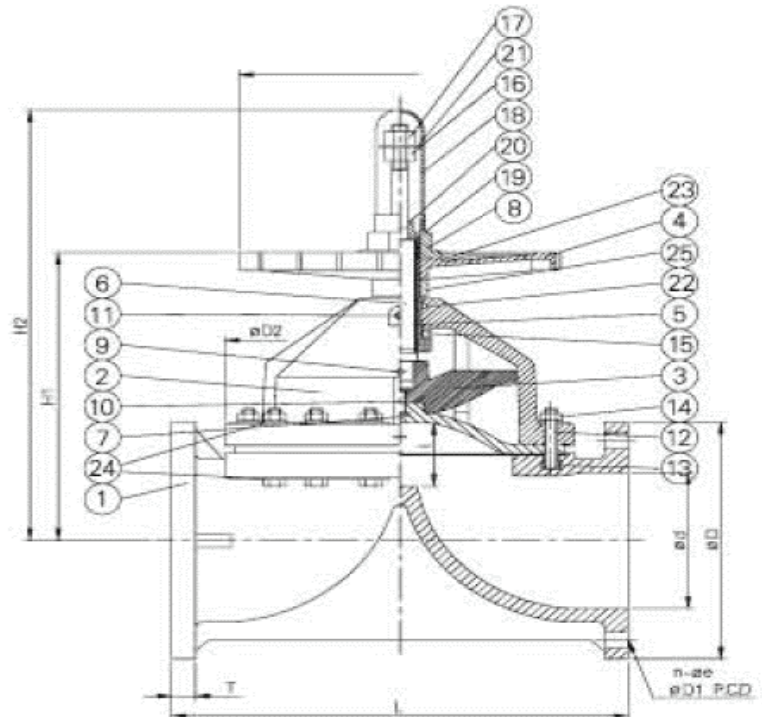
DATE:

P710/710V SPEC SHEET

Diaphragm Valve (Flanged)

MATERIALS

PART	MATERIALS	QTY	
1	Body	PVC	1
2	Bonnet	PVC	1
3	Compressor	PP + GF	1
4	Hand Wheel	PP	1
5	Sleeve	C3602	1
6	Stem	C3602	1
7	Diaphragm	EPDM, FPM	1
8	Cap	PVC	1
9	Compressor Pin	SUS 304	1
10	Inserted Metal	C3602	1
11	Grease Nipple	C3602 2 1/2" - 8"	1
12	Bolt & Washer	SUS 304	1" - 2" 6 Sets
13	Inserted Nut	C3602	2 1/2" 4" 8 Sets
14	Nut & Washer	SUS 304	6" 12 Sets
15	Thrust Bearing	PTFE 1"-3", SUS 4"-8"	8" 16 Sets
16	Stopper	SUS 304	1
17	Set Nut	SUS 304	1
18	Gauge Cover	AS	1
19	Sheet Gasket	EPDM	1
20	Sheet Ring	SUS 304	1
21	Indicative Washer	ABS	1
22	O-Ring	NBR	1
23	Name Plate	PVC	1
24	Pressure Plate	SUS 304	1 - 6
25	Casing	PVC	1



DATE: